

Universidad Nacional Autónoma de México

Facultad de Estudios Superiores Cuautitlán

Ingeniería Mecánica Eléctrica e

Ingeniería Industrial



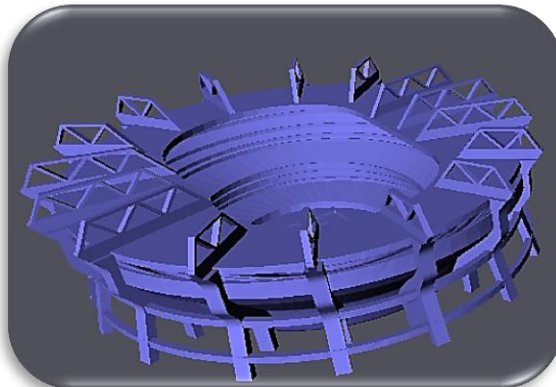
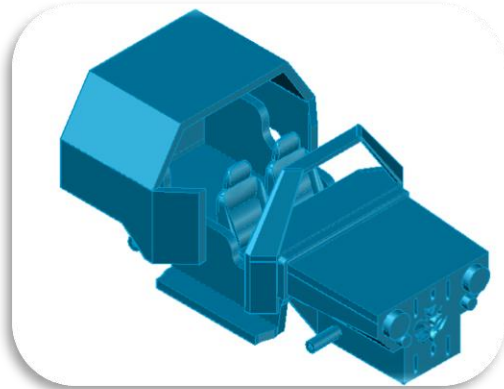
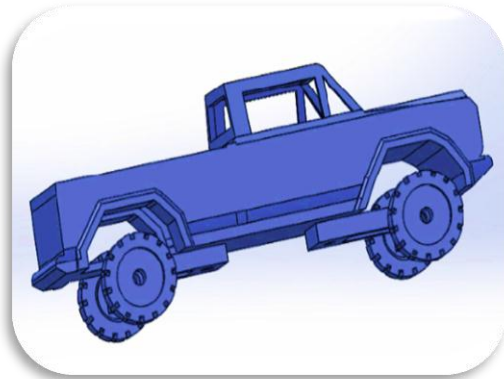
DISEÑO ASISTIDO POR COMPUTADORA

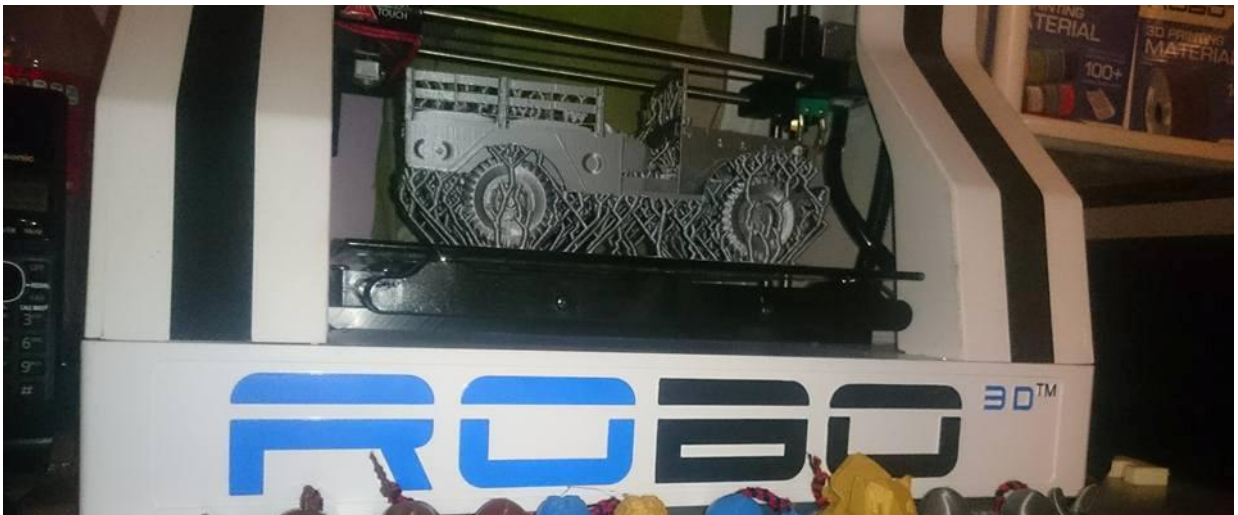
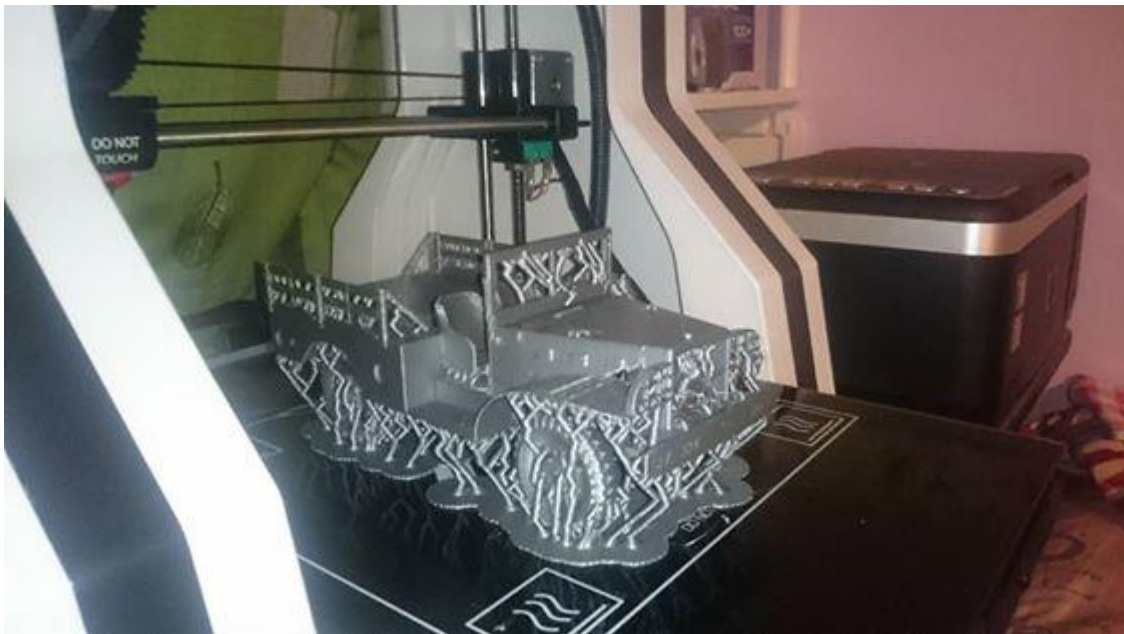
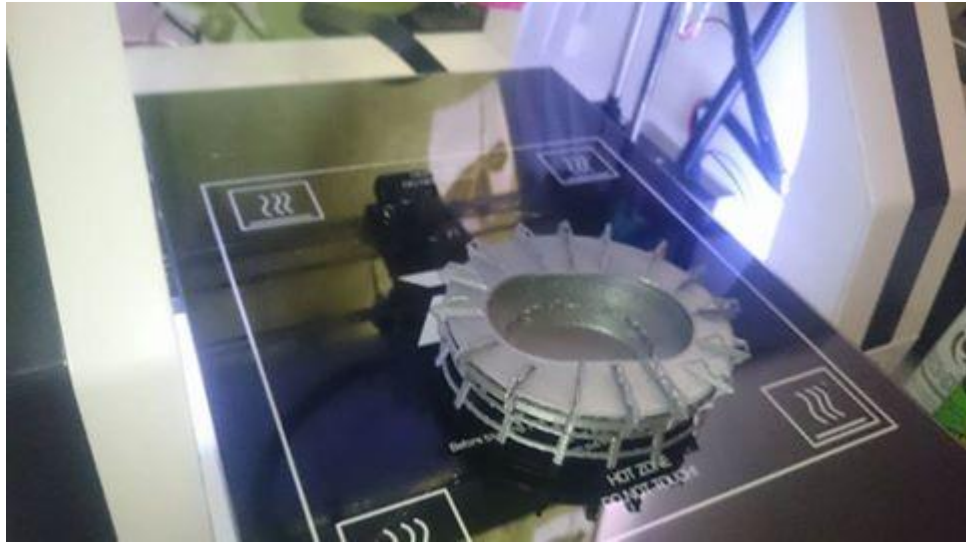
EJERCICIOS

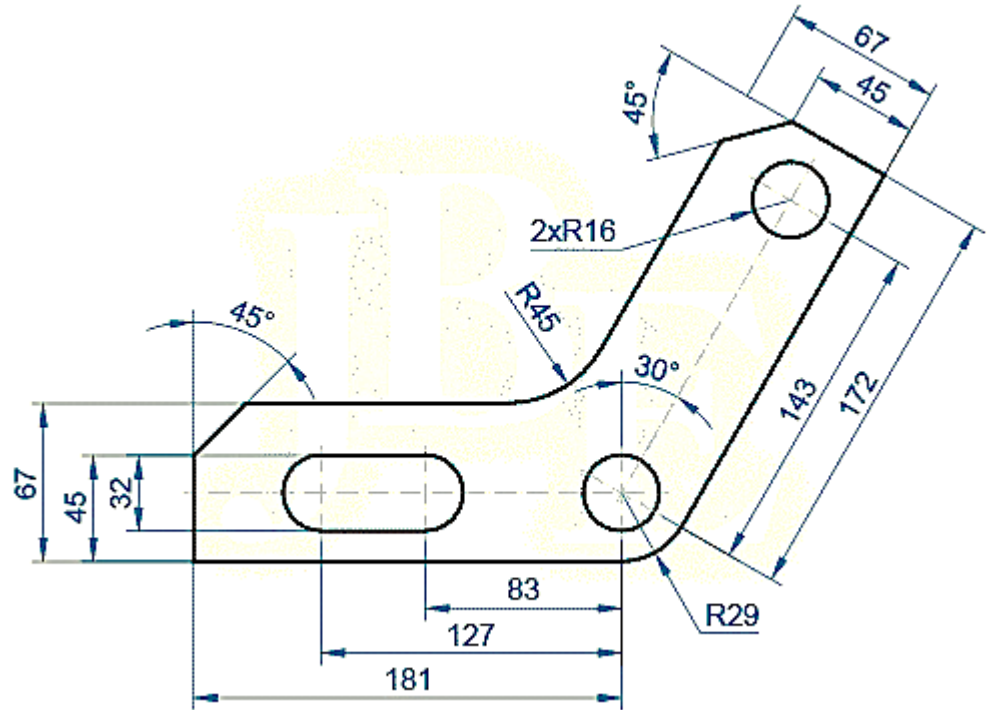


MTRO. FELIPE DÍAZ DEL CASTILLO RODRIGUEZ

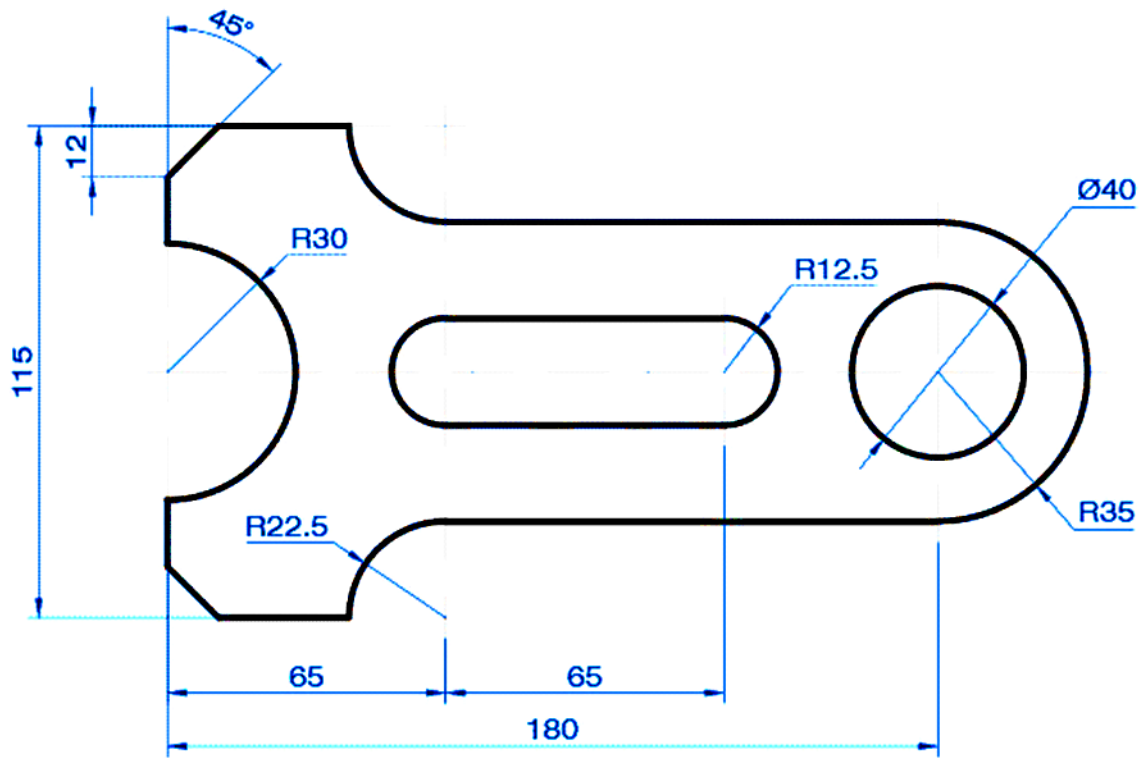
SEMESTRE 2018-1



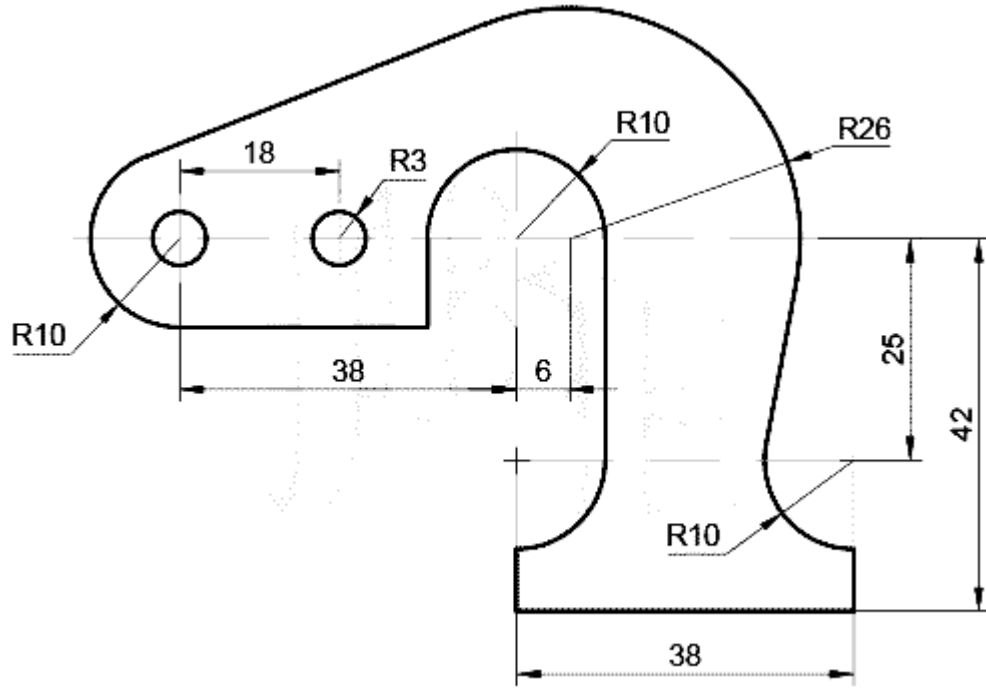




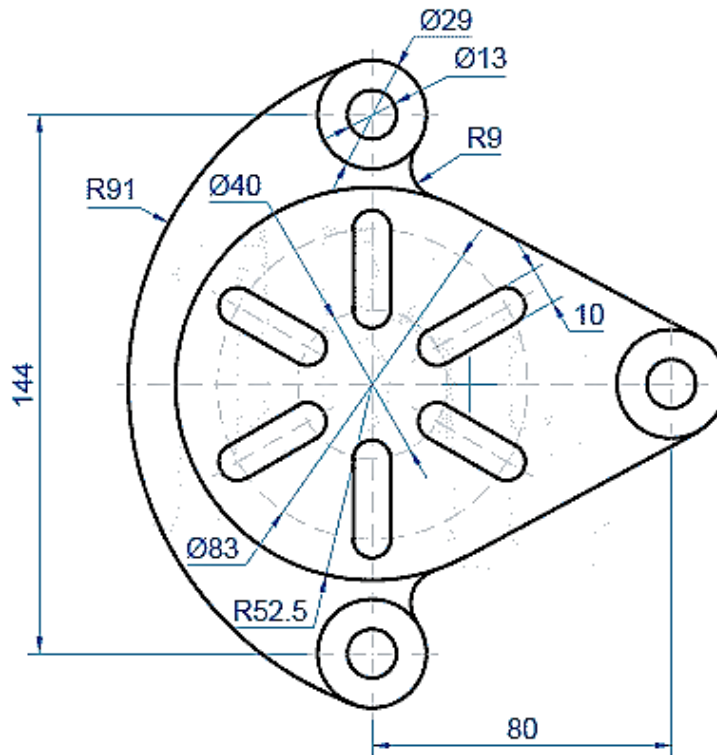
Ejercicio 1.



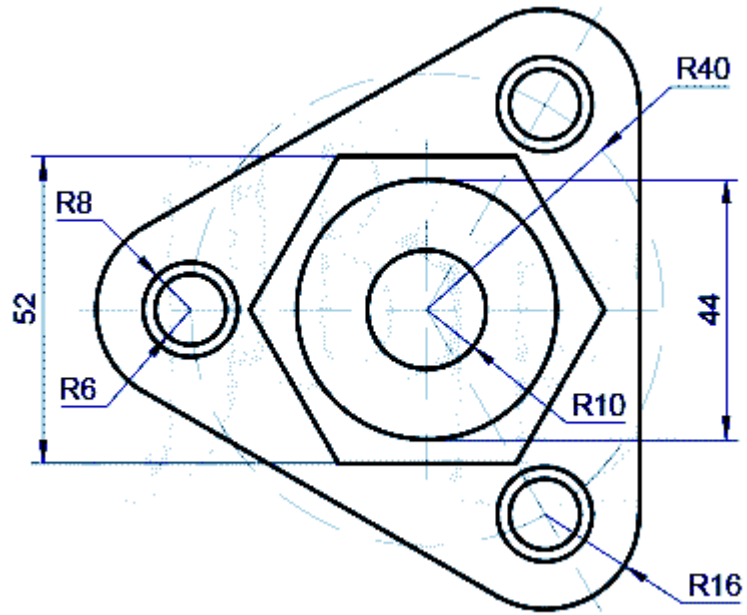
Ejercicio 2.



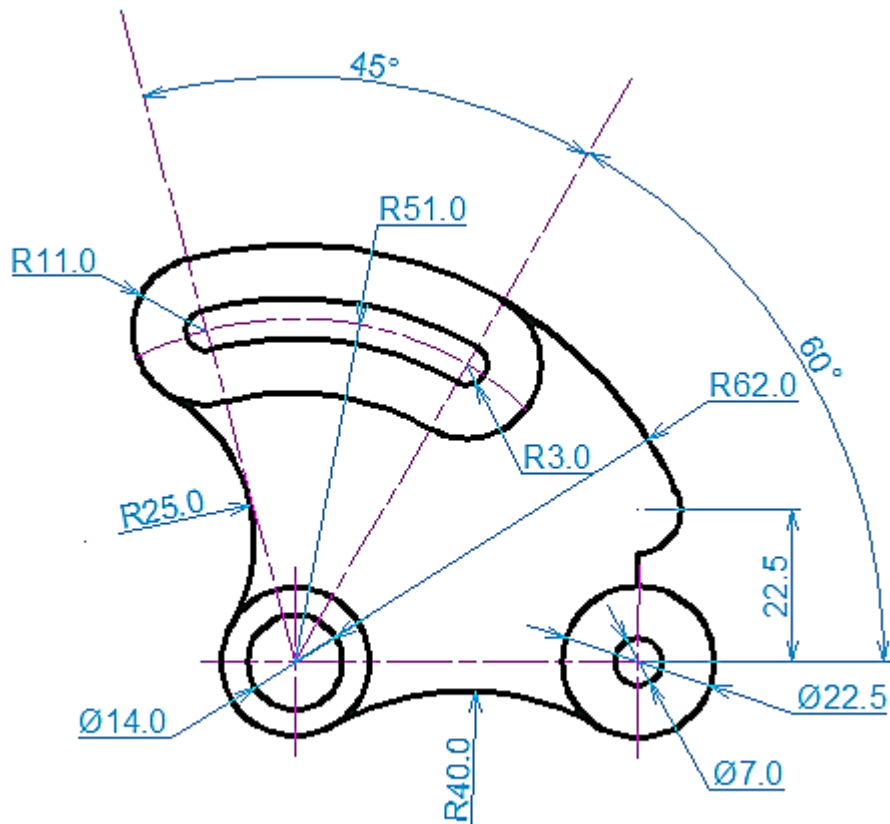
Ejercicio 3.



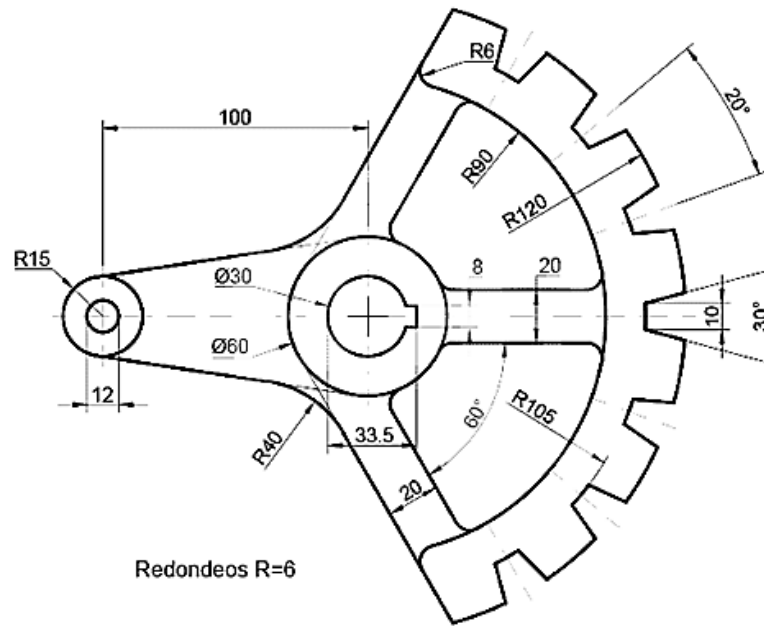
Ejercicio 4.



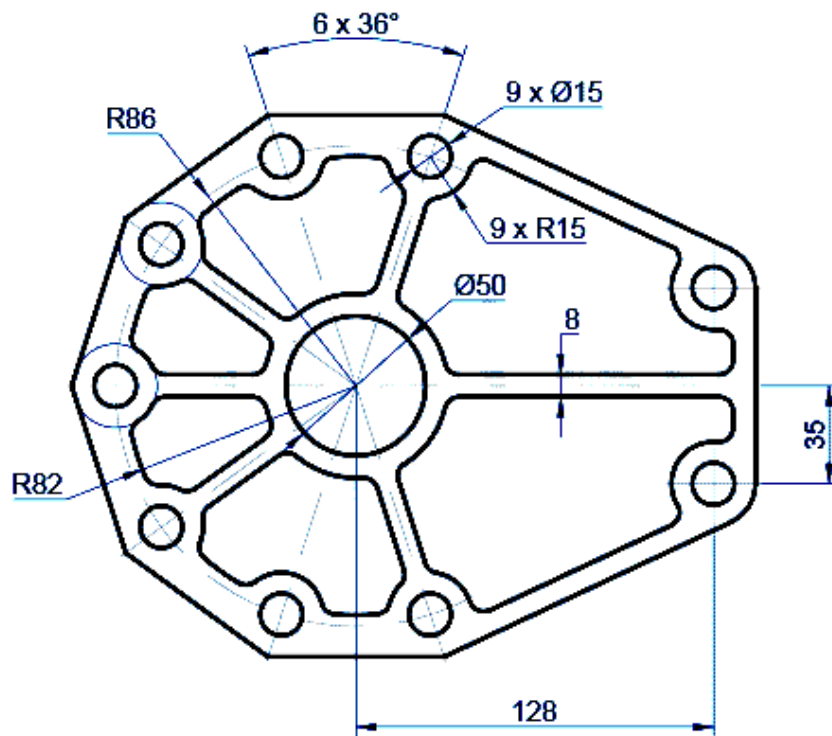
Ejercicio 5.



Ejercicio 6.

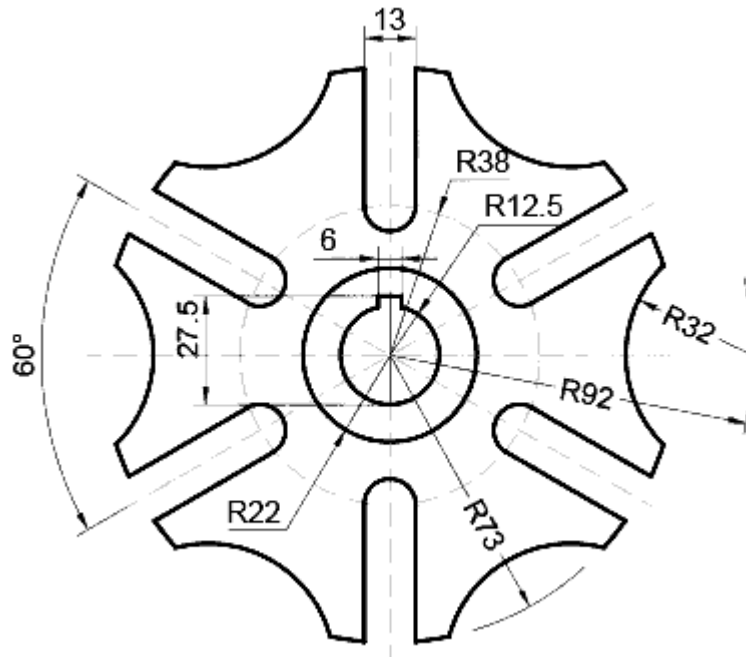


Ejercicio 7

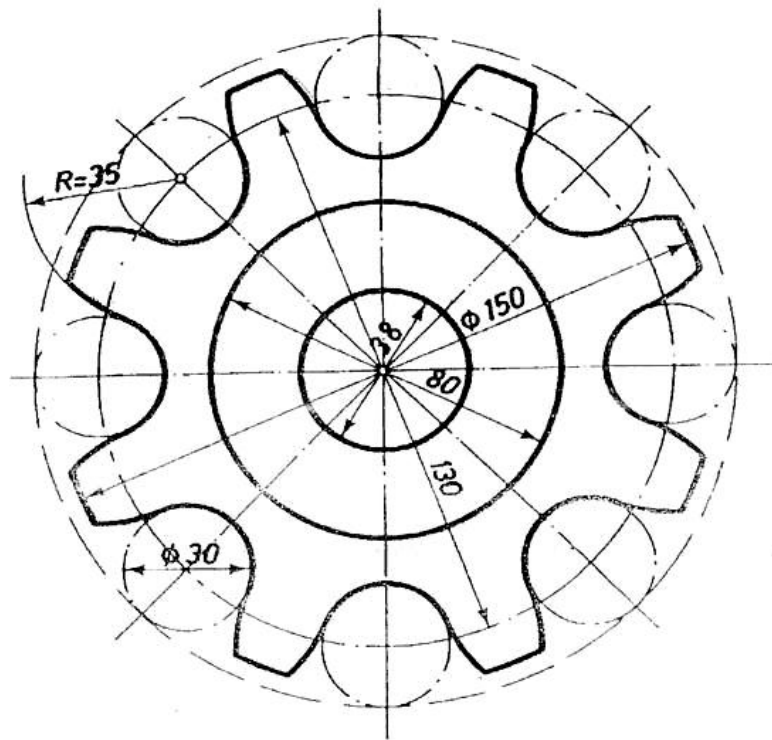


Redondeos R=5

EJERCICIO 8

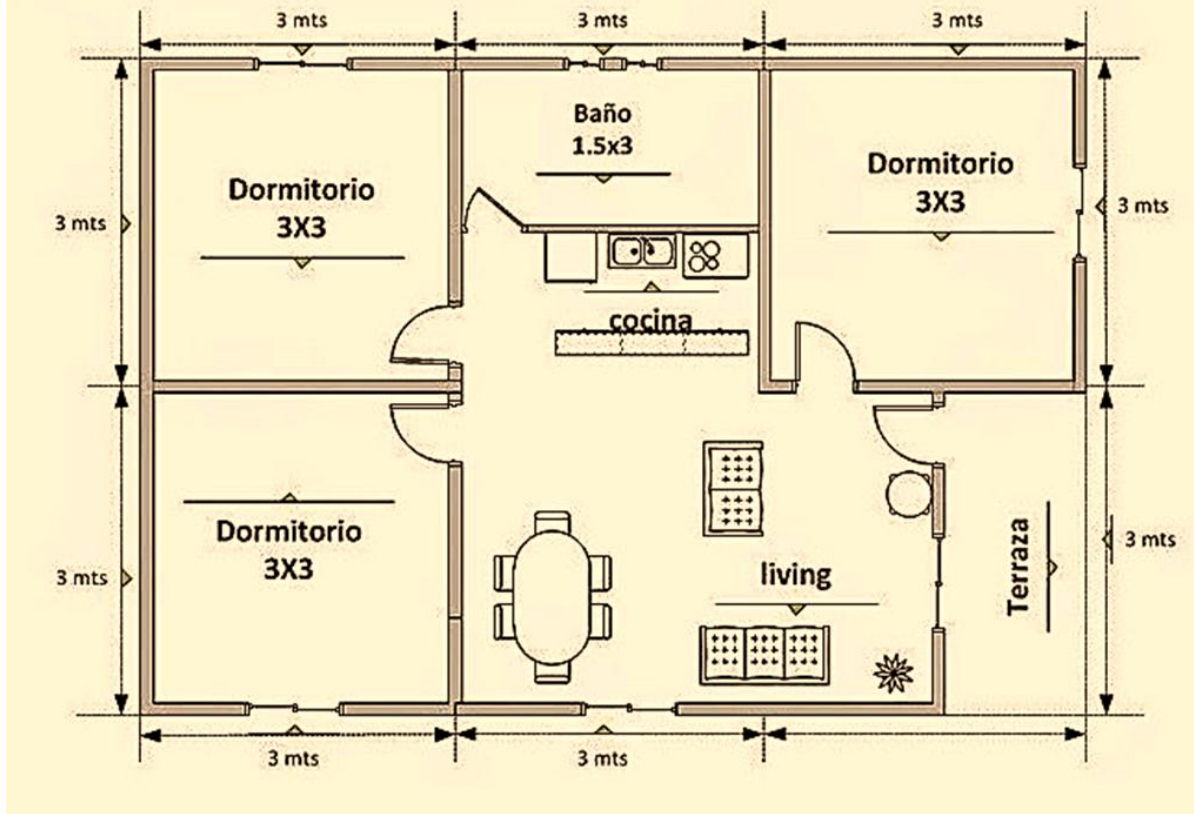


Ejercicio 9.

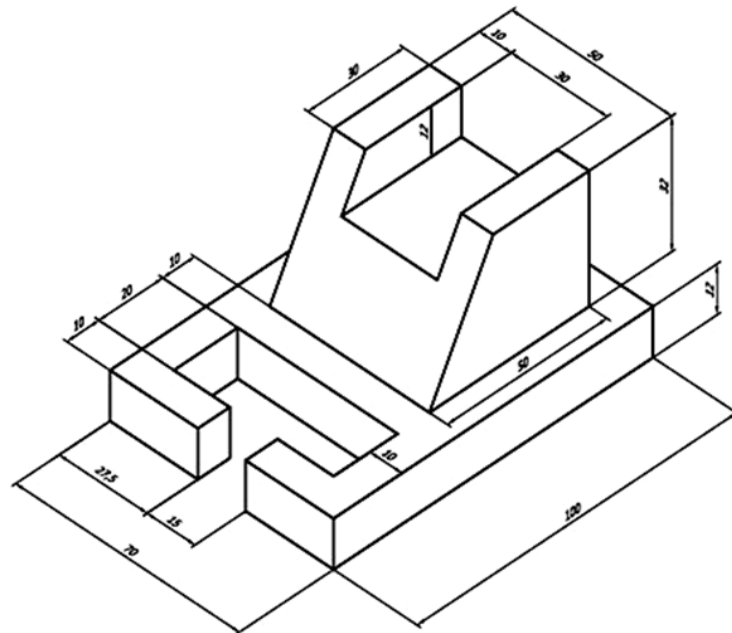


Ejercicio 10

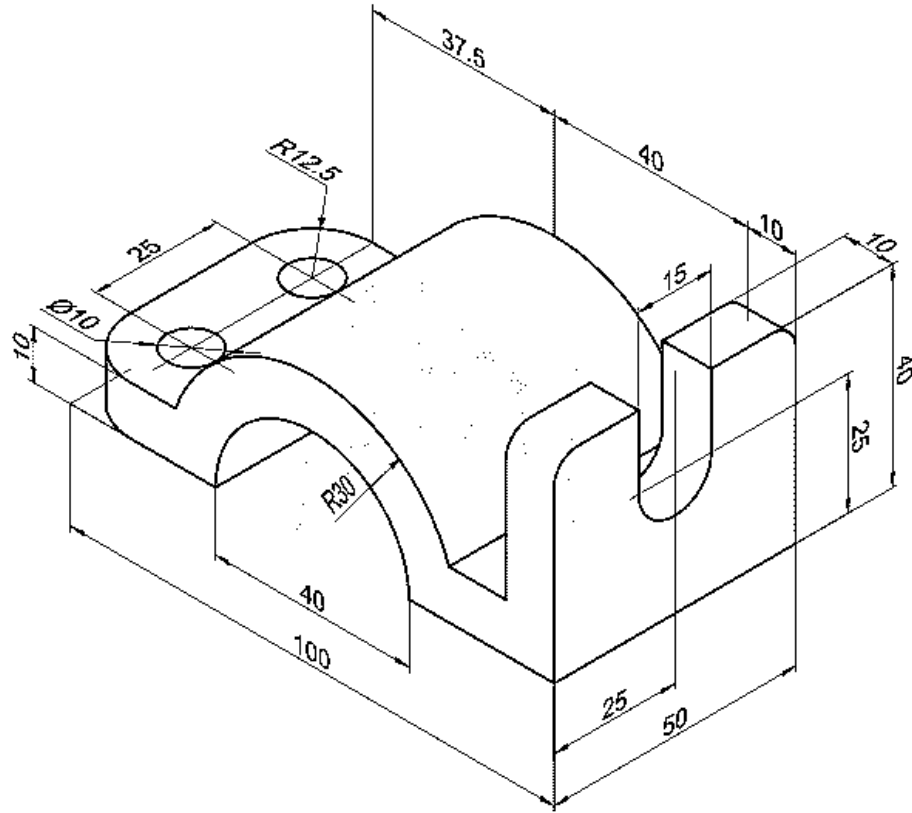
Casa prefabricada: 6x9 54m²



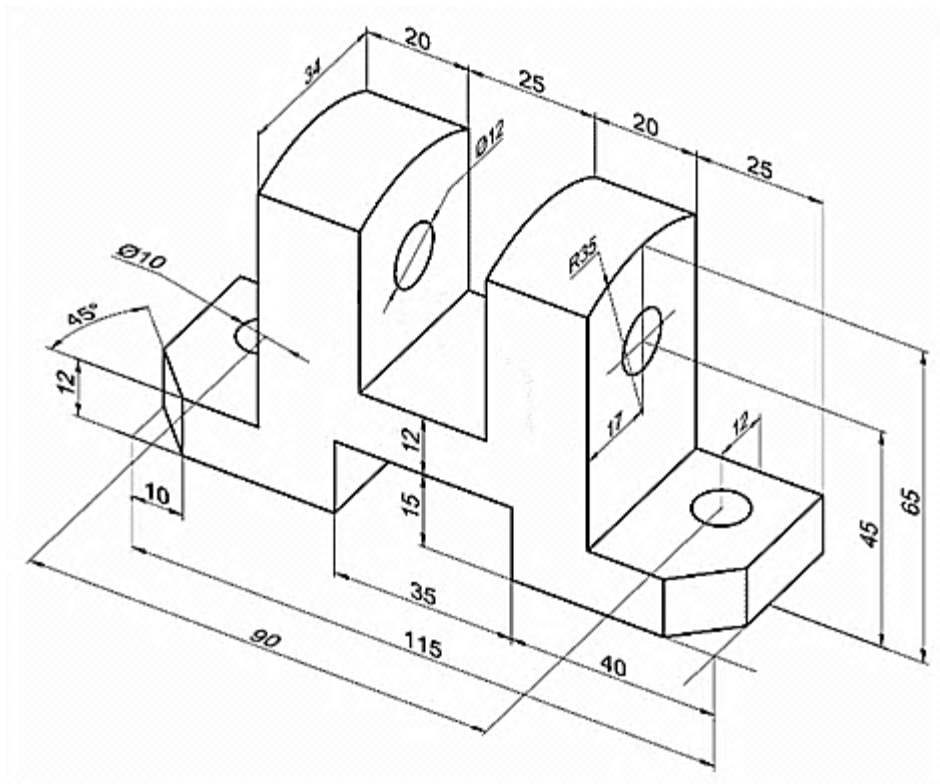
Ejercicio 11



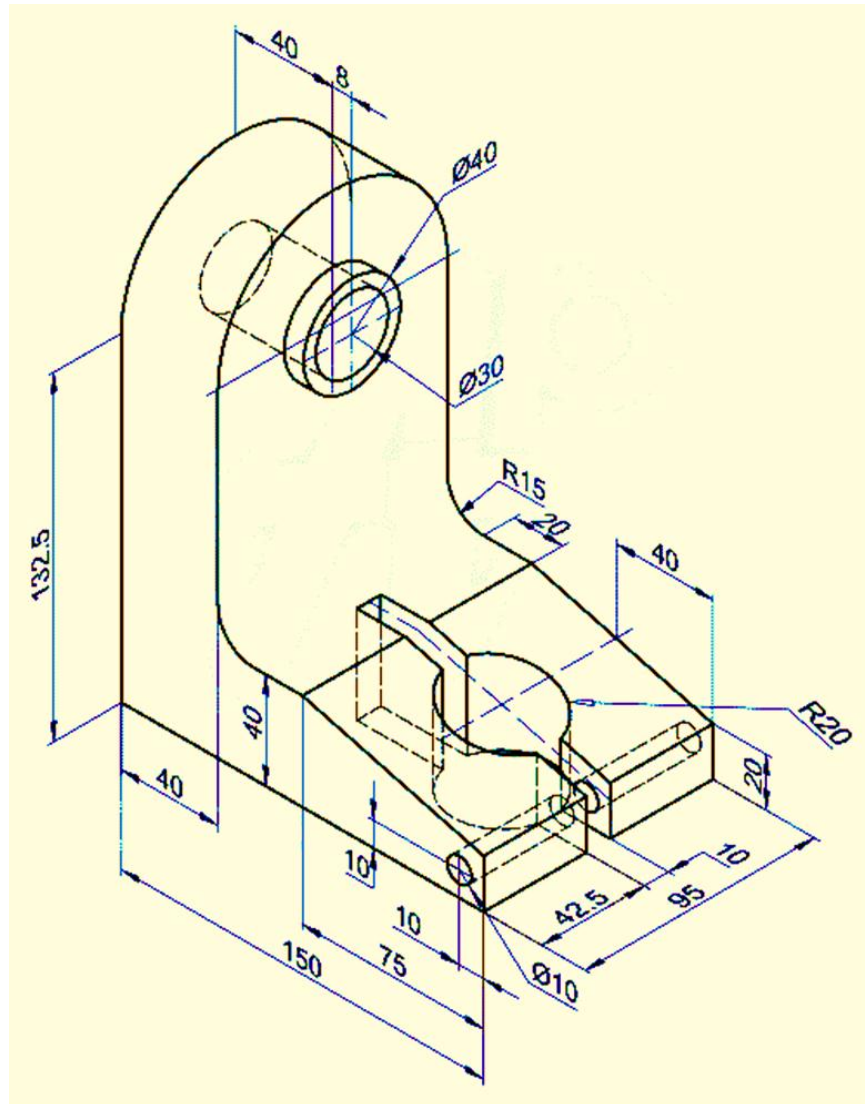
Ejercicio 12



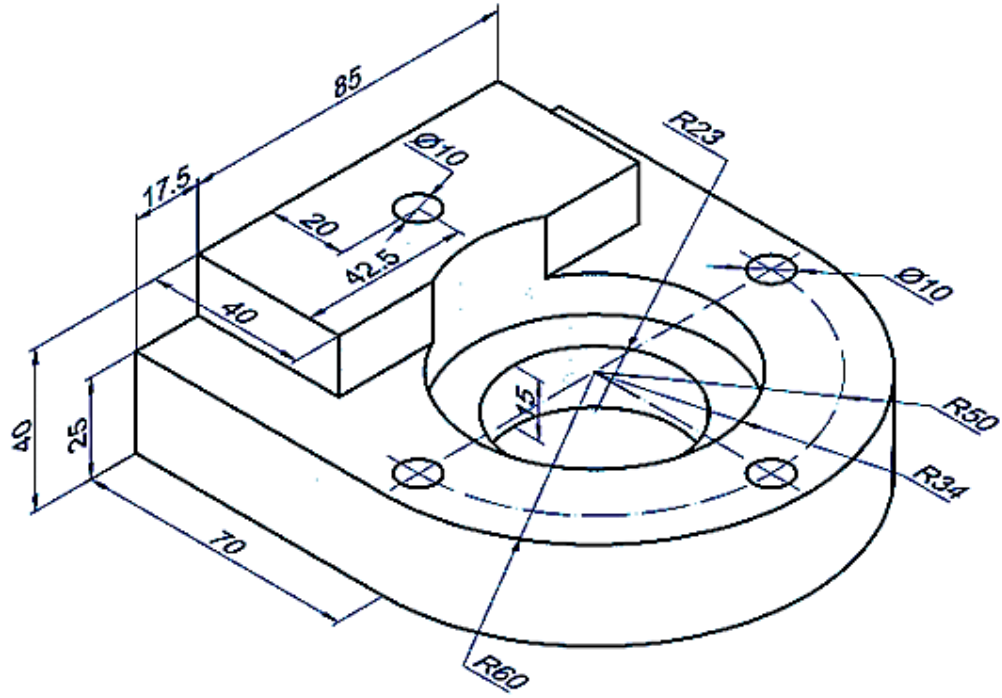
Ejercicio 13



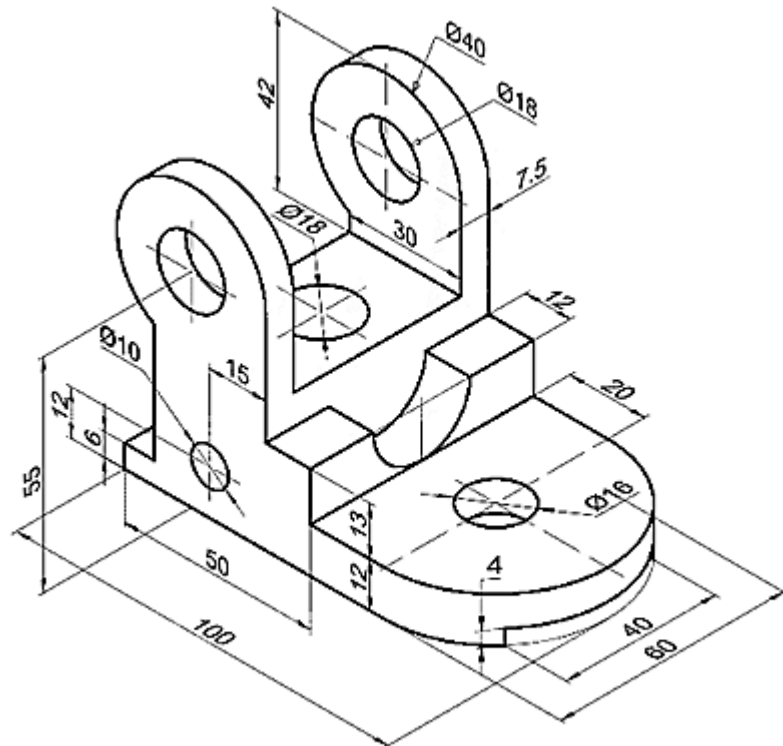
Ejercicio 14.



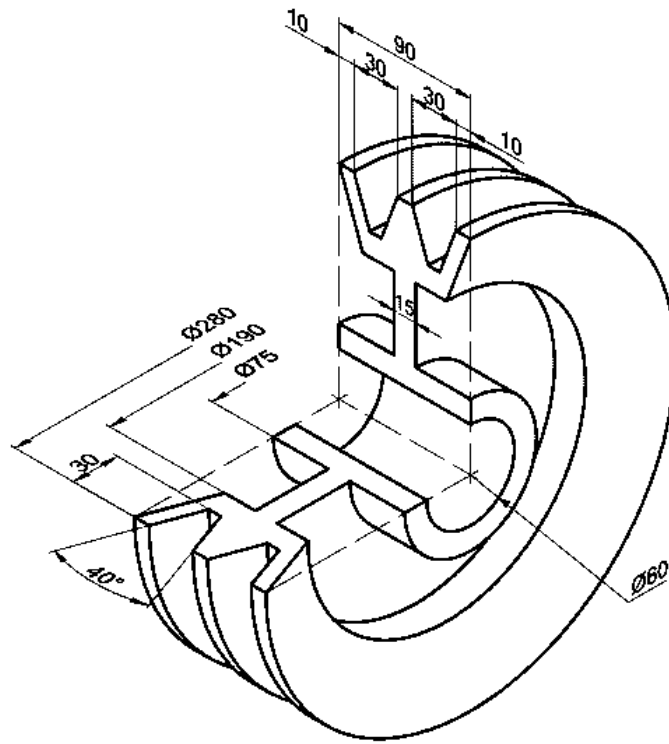
Ejercicio 15.



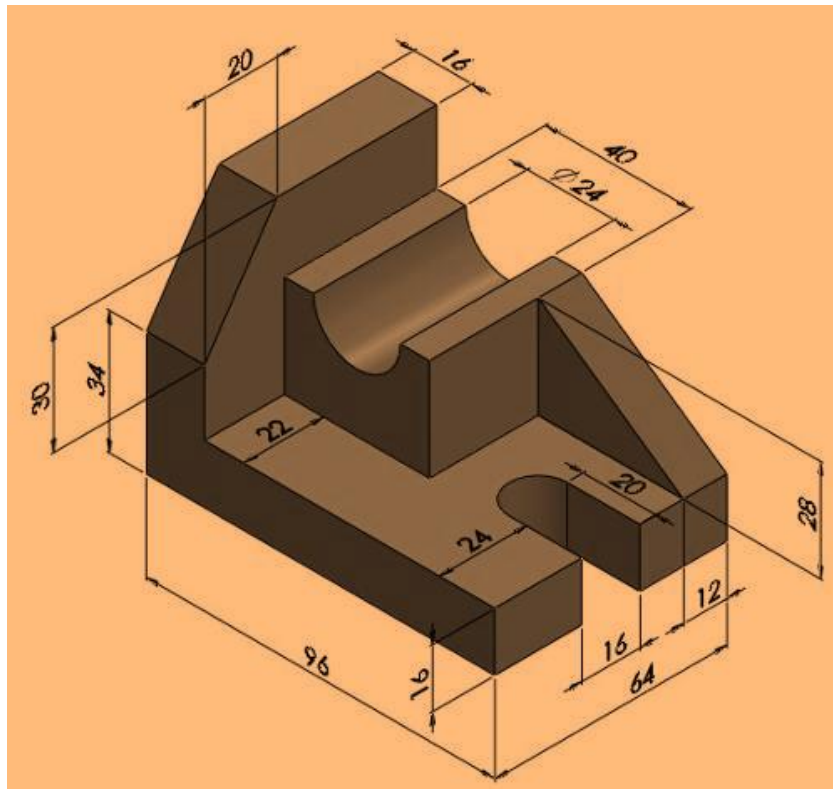
Ejercicio 16.



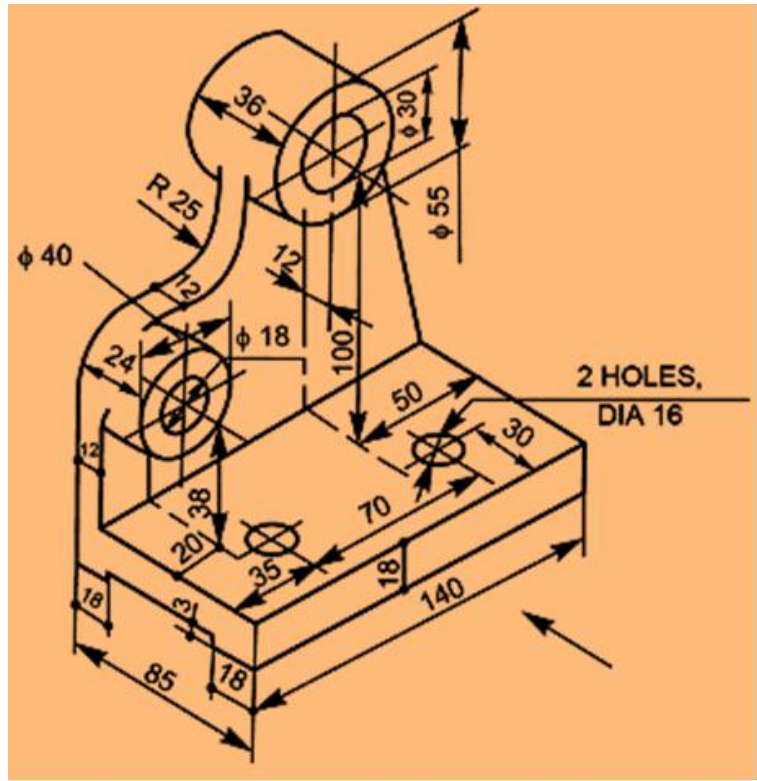
Ejercicio 17.



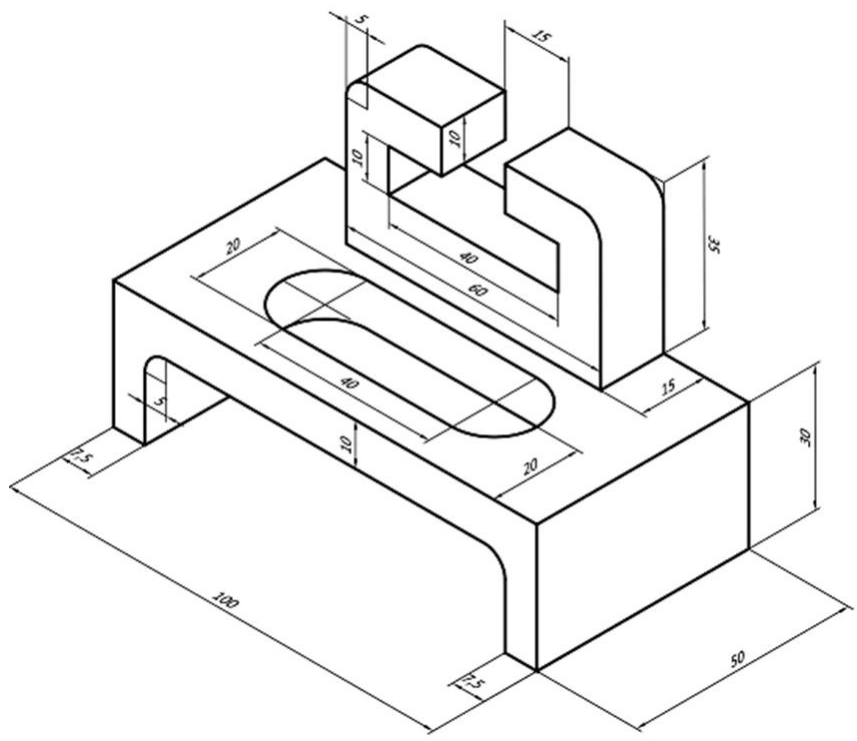
Ejercicio 18



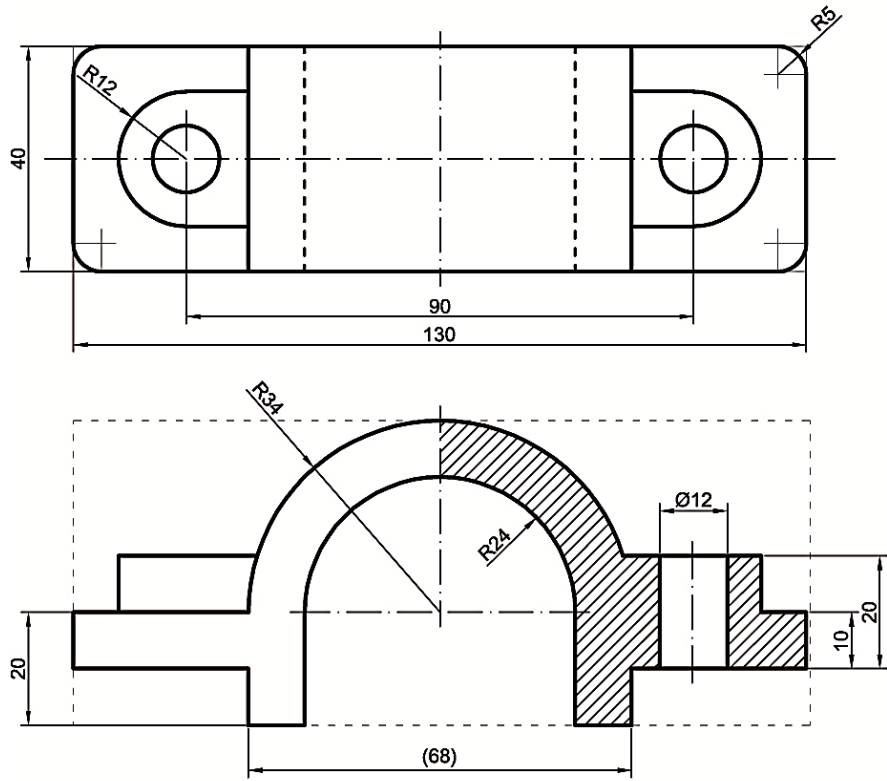
Ejercicio 19



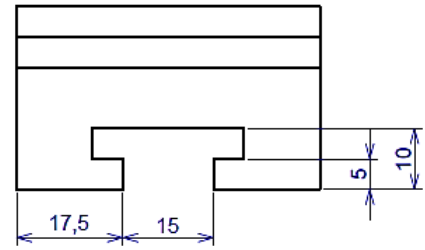
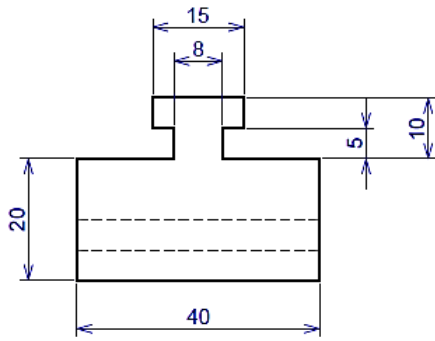
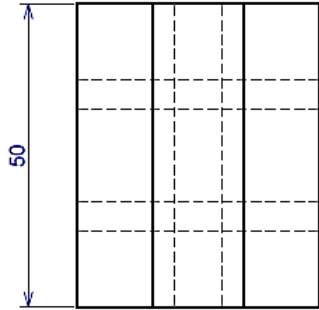
Ejercicio 20



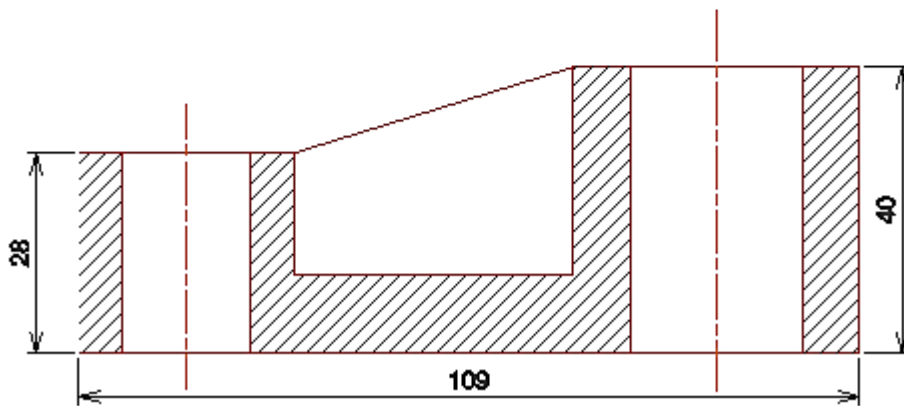
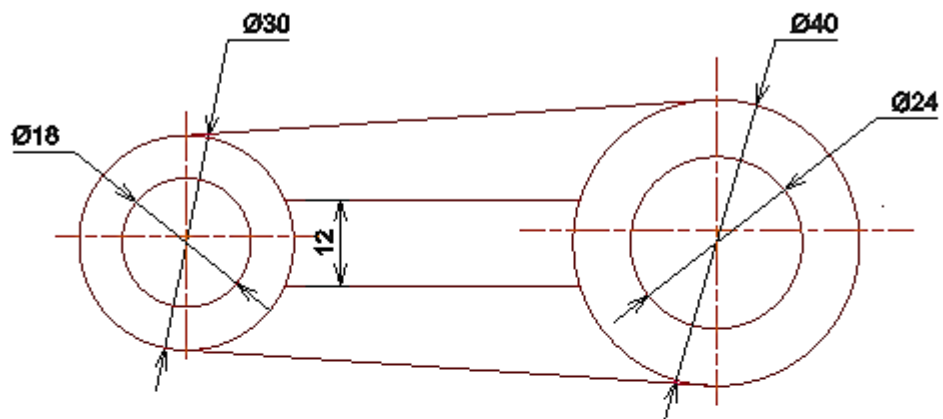
Ejercicio 21



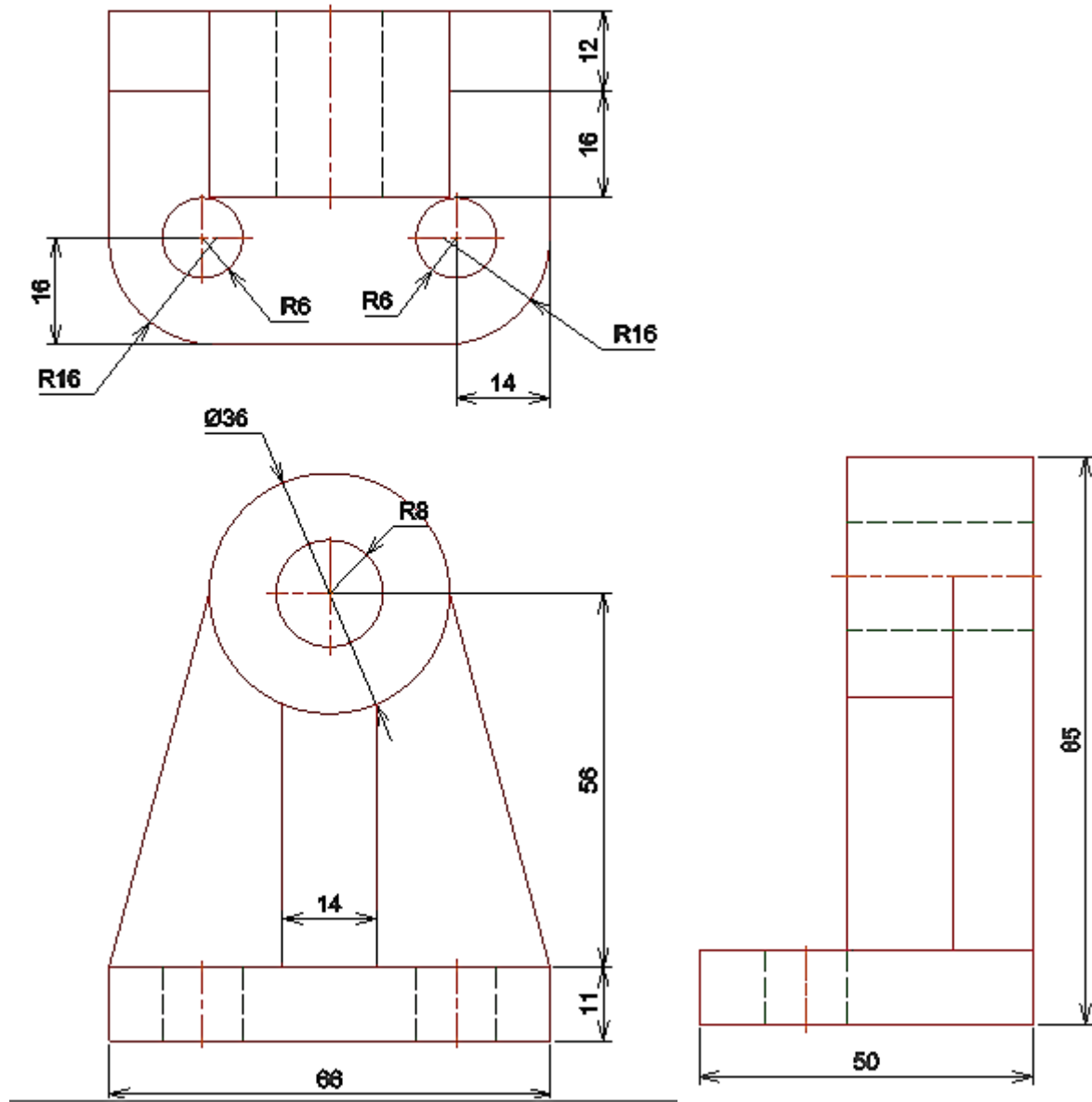
Ejercicio 22



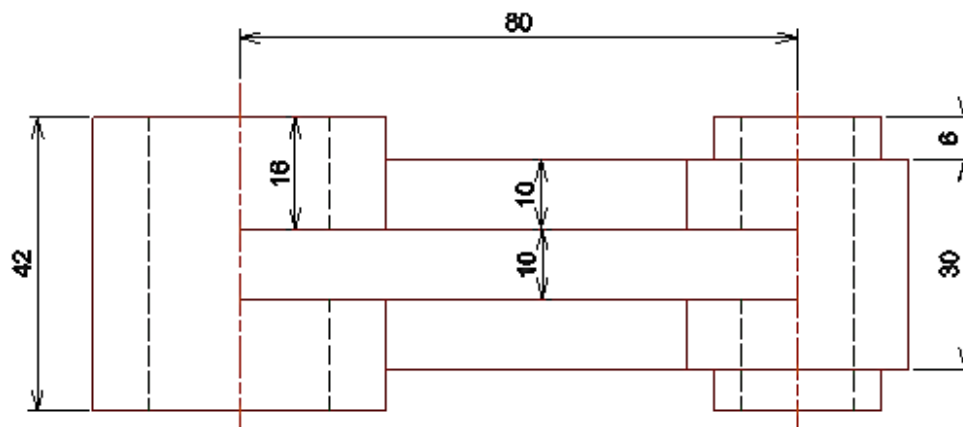
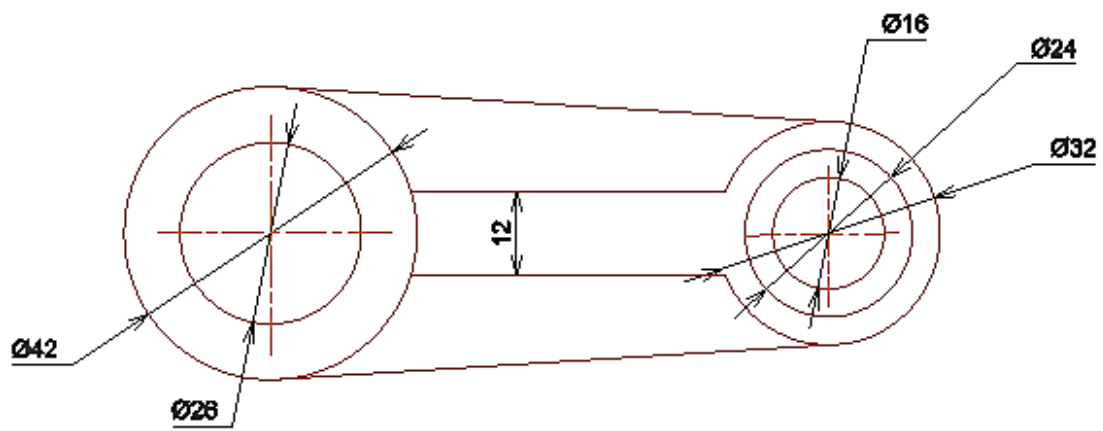
Ejercicio 23



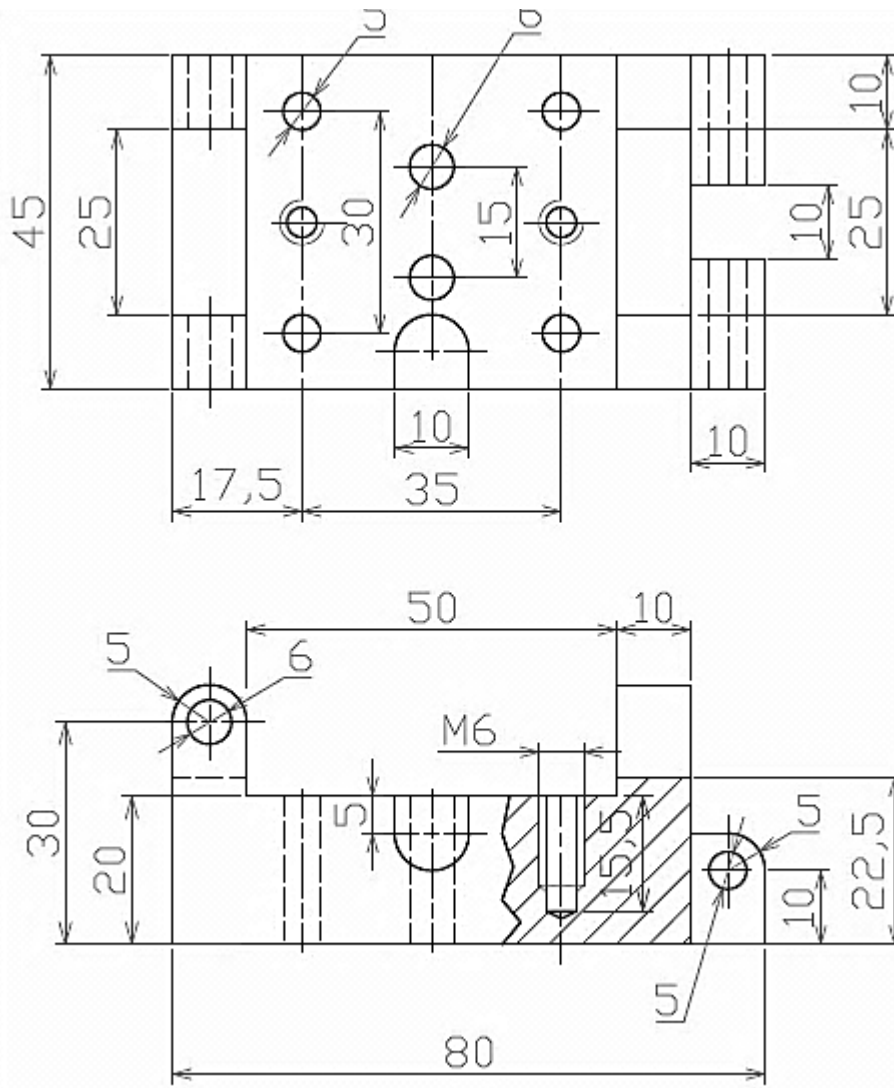
Ejercicio 24



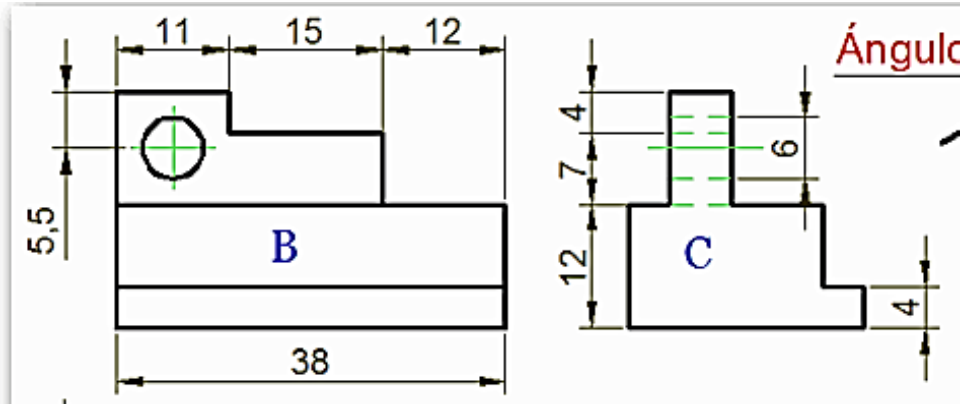
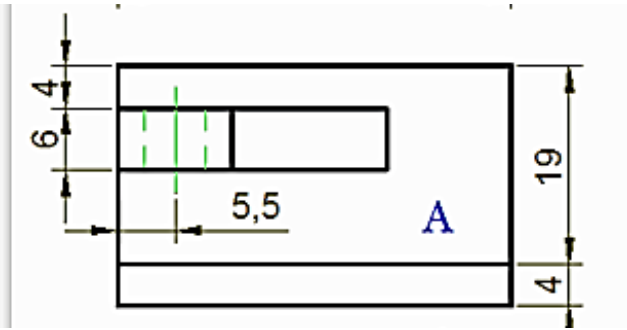
Ejercicio 25



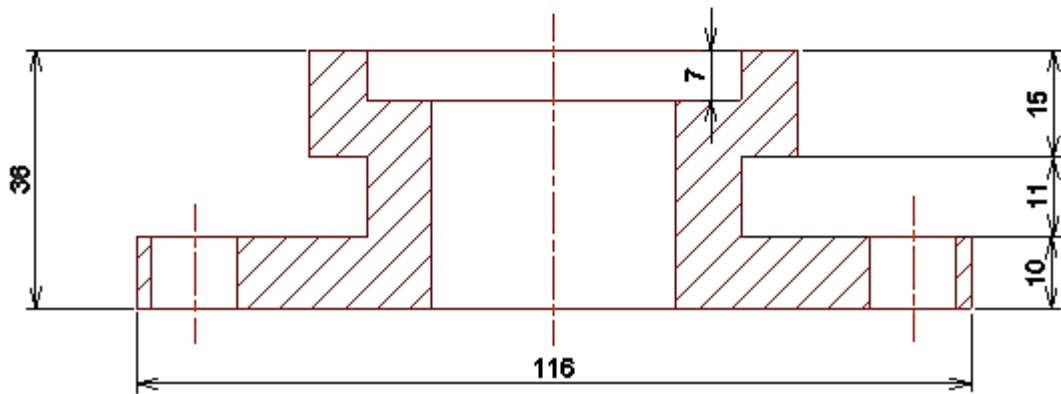
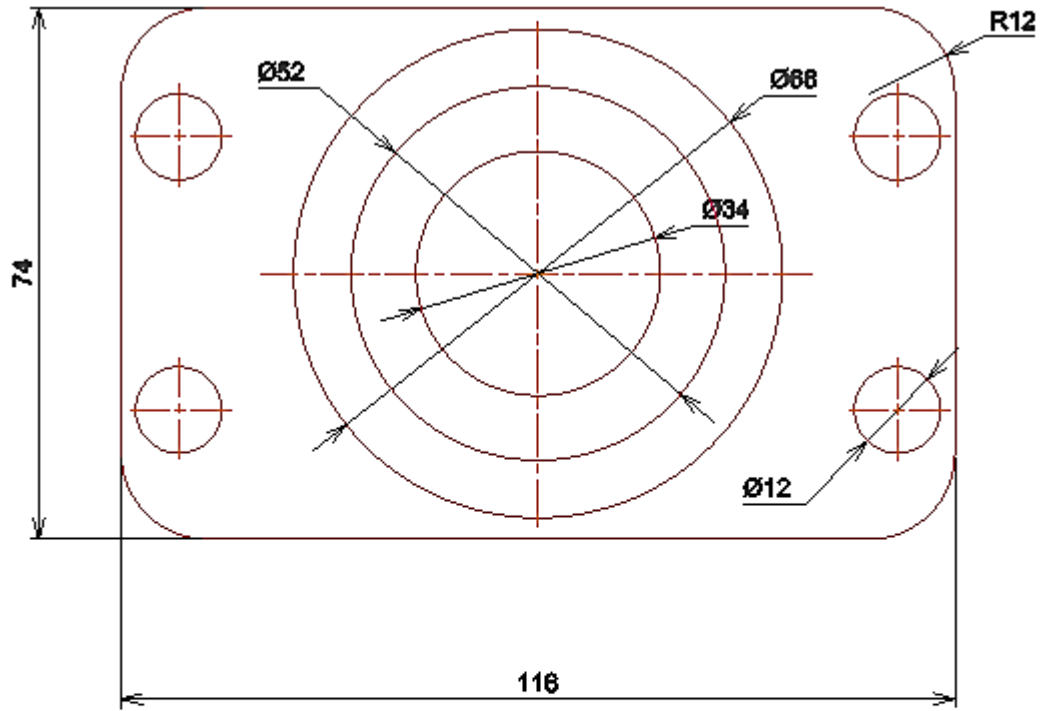
Ejercicio 26.



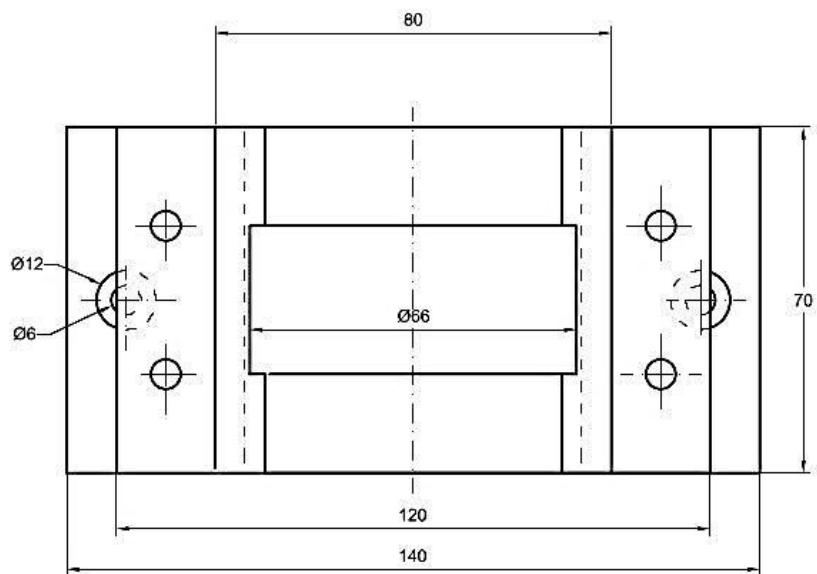
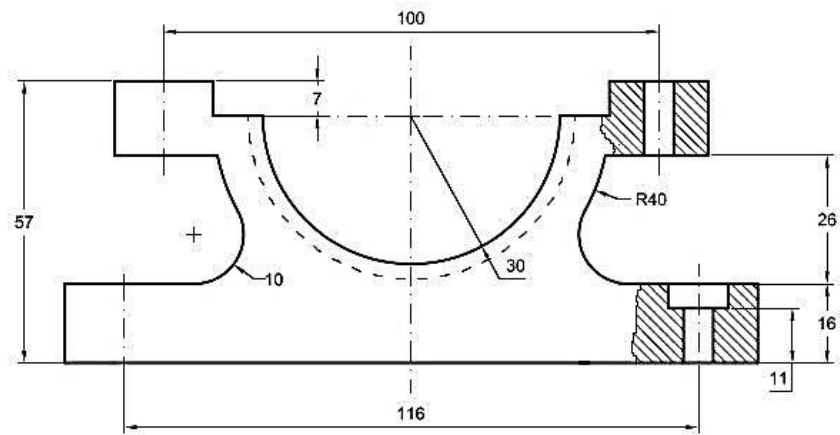
Ejercicio 27



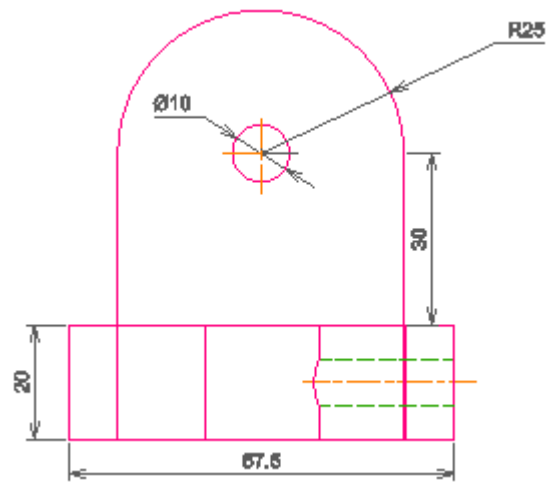
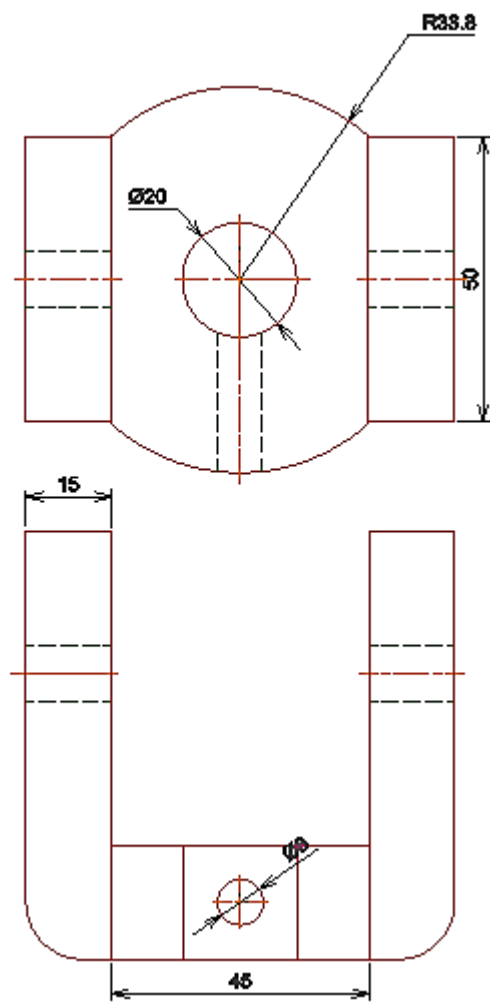
EJERCICIO 28.



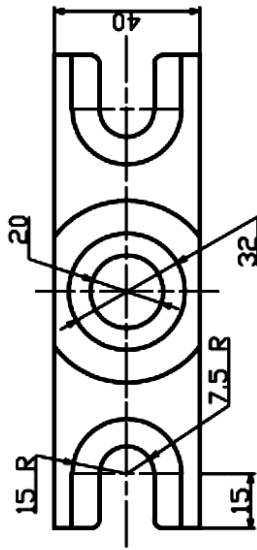
EJERCICIO 29



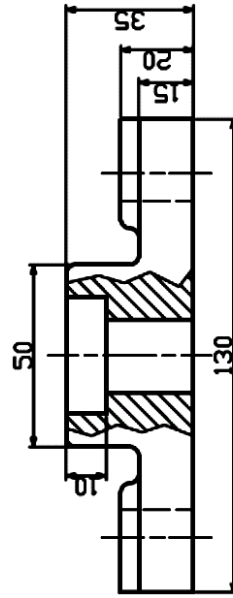
Ejercicio 30



Ejercicio 31



Nota: Radios no acotados = 2.5 mm



ESQ. 1/1	FES-C	CUNARD	8/09/07	DIB.F.D.C.R
Acotado	BASE SIMPLE		REVI	No. 7
		MATHIERRO FUNDIDO		

EJERCICIO 32.

PROYECTO FINAL

ESC:1:35



1. DKW Munga



2. Land Rover, Defender 90



3. Toyota Land Cruiser FJ40



4. Jeep Uaz Hunter



5. Suzuki Jimny



6. LuAZ 969



7. Karaba VTG01 4x4



8. Dodge Rampage